



EMS Plus NAEMSE Suite Tutorial: BlackBerry

This tutorial will teach you how to utilize every aspect of PEPID EMS Plus NAEMSE Suite and is organized by the main navigation menu which can be located by pressing the BlackBerry menu key to the left of your trackball. At the end, you will find a quiz, which will prepare you to quickly and efficiently navigate through PEPID EMS.

>> Table of Contents

The Table of Contents allows you to see all that is offered on your PEPID EMS Plus NAEMSE Suite. The Table of Contents is always available through the menu key, as well as at the top of the index page.



Within the Table of Contents, you select from a thematic listing of topics as shown below:

- About NAEMSE
- How To Use PEPID
- What's New
- Prehospital Care
- Acute Care References
- Illustrations
- Medical References
- Toxicology
- Drug Database
- Drug Interactions Generator
- Medical Calculators
- Warning
- Authors

>> Back

To return to the previous screen, simply click the back button on your BlackBerry device. If you select a link to view a subtopic, you can use the Back icon to return to the previous screen, just like on your internet browser.



>> Acute Care Reference

The Acute Care Reference is available through your menu key and provides links to immediate life saving protocols: BLS, ACLS, ATLS, PALS, RSI, procedures, algorithms, quick drugs and drips, etc.

The {TOC} Table of Contents Link located top right, links you to a broader range of topics.

With the Acute Care Reference you select topics from a thematic listing as shown below:

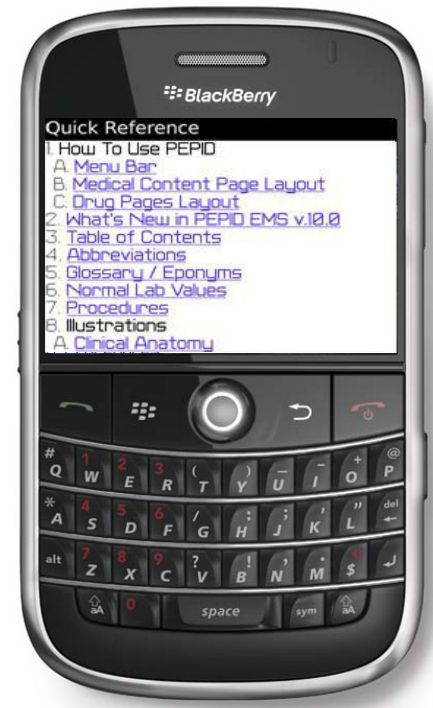
1. Life Support
2. Airway Support
3. Acute Care Procedures
4. Medical Status
5. Shock Types
6. Other
7. Authors

>> Help

The help section is always available through the menu key and contains a built-in tutorial, as well as a description of the content and updates added with your last update.

Within the help section you can view a thematic listing of the following topics:

1. How To Use PEPID
2. What's New in PEPID v.10.0
3. Table of Contents
4. Abbreviations
5. Glossary/Eponyms
6. Normal Lab Values
7. Procedures
8. Illustrations
9. Why PEPID
10. Authors





>> Drug Interactions Generator

The drug interactions generator allows you to select up to eight different drugs, herbals, OTCs and supplements and cross reference their interactions. It can be accessed through the menu key or through the table of contents.

If you are viewing information on a particular drug, you can access the interactions generator directly from the drug content and it will be automatically selected for you.

To Use:

1. Select Drug Interactions from your menu key.
2. Use keyboard to enter drug name
3. Select up to eight drug names
4. Select confirm after all selections are made
5. Select Get Interactions

The drug interactions generator checks interactions between each subject drug and all of the other drugs you have selected.

Notes:

- Numbers represent severity of interaction: 1 = low, 5 = high
- Interactions listed by decreasing severity
- When there are multiple interactions between two drugs, the strongest in severity will be in bold
- Other interactions of same group listed in regular type
- ↑ Indicates drug level or effect of the following drug will be increased
- ↓ Indicates drug level or effect of the following drug will be decreased
- ↑ ↓ Indicates drug level or effect of the following drug will either be increased or decreased
- ATC: anticoagulation
- Tap any underlined text for more information

Example: Cross reference the following drugs: Amiodarone, Biaxin, Coumadin, and Ginger. PEPID finds seven drug interactions. Click on any of the interactions to view details. A sample of the results are as follows:

- 5- ↑ Qt:Amiodarone, Biaxin-Both increase QTc interval, never use combination
- 3- ↑ Amiodarone, Coumadin-Amiodarone increases levels and effects of Coumadin. Possible serious or life-threatening interaction
- 3- ↑ Coumadin, Ginger-Both are anticoagulants-Potential danger





>> Medical Calculators

To access an alphabetical list of medical calculators, select medical calculators from your menu key. If you'd like to access calculators by type, select medical calculators through the table of contents. Our calculators are also integrated within our clinical and lab content.

To Use:

1. Select Medical Calcs from the menu key.
2. Locate the calculator you are search for
3. Tap on the calculator icon
5. Input data your keyboard
6. Click the results button

Example: Calculate the Body Mass Index of a 5'7" female weighing 150 lbs.

- Result: 23.5248 kg/sq.m.

It also tells you that the normal range is 23-27 kg/sq.m.



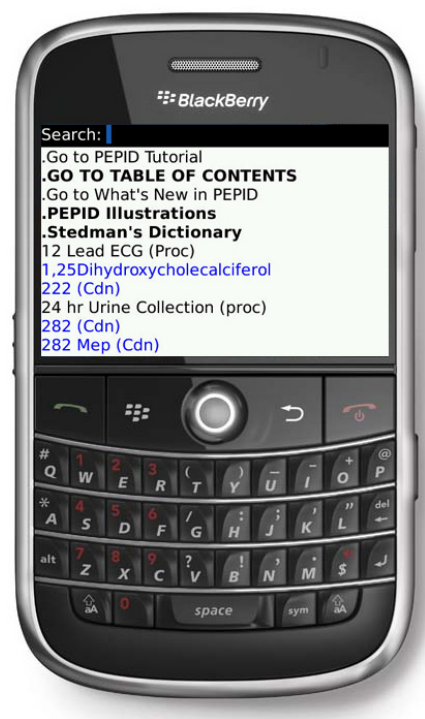


>> Quicklinks Menu

The quicklinks menu icon allows you to jump to specific information within the top you're viewing. It can be found from your menu key, below your main menu items. To exit your the menu, click the back button on your device. Just click on the BlackBerry menu key at any time to bring the quicklinks back up.

The quicklinks menu icon allows you to:




- Access subtopic navigation menu from anywhere on page
- Display quicklinks menu at the bottom right-hand corner
- Select from list to link directly to subtopic



>> Home

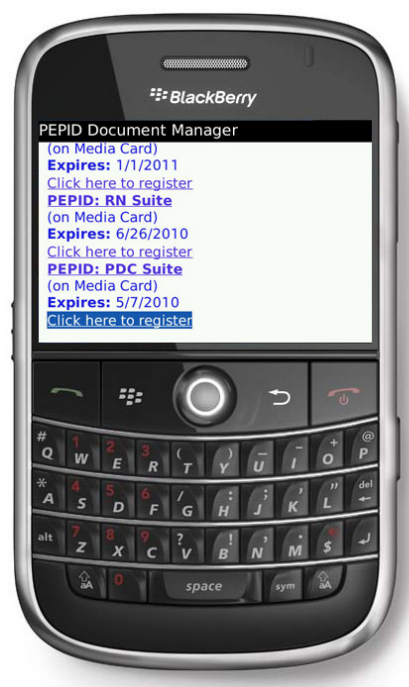
The home icon takes you to the PEPID index, which is essentially your search tool for PEPID. The index allows you to search for anything within our content, whether it's a disease, drug name, medical calculator, lab or procedure.

To Use:

1. Select Home from your BlackBerry menu key
2. Type in the letters of the topic you want to search, like Vtach, for example
3. Select Vtach in the listing menu
4. From the Ventricular Tachycardia (Vtach) page, you can view your quicklinks by scrolling through your menu to jump to subtopics including diagnosis, pathophysiology, or treatment
5. From the Vtach page, you can tap on the  Camera icon to view Monomorphic and Polymorphic rates. Click back to return.
6. On the Vtach page, use trackball to scroll down the page. Select vagal maneuvers to view more details. Click the back button on your device to return.
7. Continue to scroll down the Vtach page, and you will come across relevant calculators. You can tap on the Qt int to view the QT Interval Correction equation, or you can tap the  calculator icon on the screen next to the Qt int link to use the calculator. Click back to return.
8. Continue to scroll down the Vtach page, and tap on the Amiodarone link. From the quicklinks menu, you can view dosing, kinetics, IV info, overdose management, etc. You can also scroll through the content using your trackball. Scroll down and tap on any of the  IV drip rate icons to use a dosing calculator.

Notes:

- The fastest way to find any topic
- Links directly to the index
- Use keyboard to enter first few letters
- Alphabetical index is colorized for distinction between keywords
- Drug topics are blue
- Tables of contents are bolded
- Chapter headings are bolded and capitalized



>> My PEPID

My PEPID takes you to the PEPID Document Manager, which allows you to:

- View where PEPID is being stored on your device
- Find out when your subscription expires
- View the Register Document
- Register new products on your device
- Delete old products on your device

>> Other Links



The camera icon takes you to all related images, including original high-resolution color illustrations that are great for patient education or personal reference. Our illustration include clinical anatomy, rhythm strips, procedures, environmental, toxicologic and diseases and disorders.



The IV Drip Rate icon takes you a drug-specific IV drip rate calculator.

{Rel. Topic} The Related Topic link takes you to broader topics related to the current page.



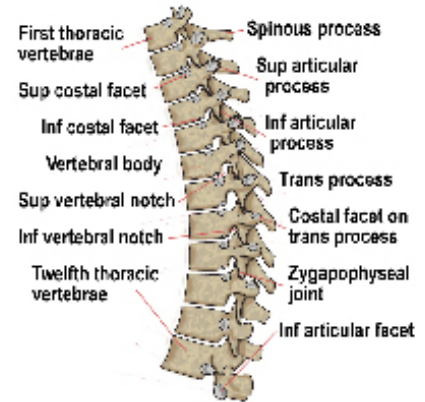
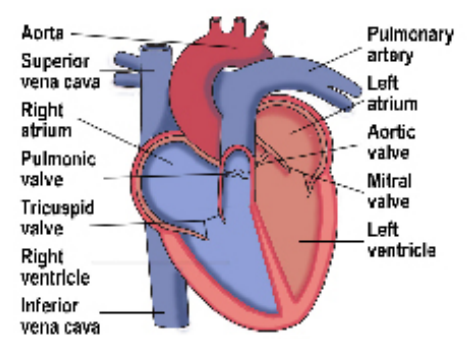
The Treatment link allows you to view related treatments.



This icon indicates a Stedman's term is integrated, simply click to read the definition of the term.



This icon indicates there is an evidence-based inquiry embedded in the content.





EMS Plus NAEMSE Suite TEST

1. What is the revised trauma score (RTS) for a patient with a Glasgow Coma score between 9-12, systolic blood pressure between 50-75 and a respiratory rate > 29?
 - a) 7.672
 - b) 6.171
 - c) 61.71
 - d) 3.450
 - e) None of the above

2. Which of the following is not a neck landmark?
 - a) Angle of mandible
 - b) Cricoid
 - c) Larynx
 - d) Clavicle
 - e) All of the above

3. Out of the drugs listed, which combination should never be used because of its serious, possibly life threatening interaction?
 - a) Acetazolamide and Aspirin
 - b) Acetazolamide and Flunarizine
 - c) Acetazolamide and Cisapride
 - d) All of the above
 - e) None of the above

4. In the home index, drug monographs appear in what color?
 - a) Red
 - b) Green
 - c) Black
 - d) Blue
 - e) Orange



5. Which component allows you to access subtopic navigation menu from anywhere on the page?

- a) Home Index
- b) Quick Links
- c) The TOC
- d) Menu Bar
- e) None of the above

6. For a patient suffering from status epilepticus, what drug is not indicated for use in seizure cessation?

- a) Phenytoin
- b) Lorazepam
- c) Phosphenytoin
- d) Clonazepam
- e) All of the above

7. Out of the drugs listed, which combination should never be used because of its serious, possibly life threatening interaction?

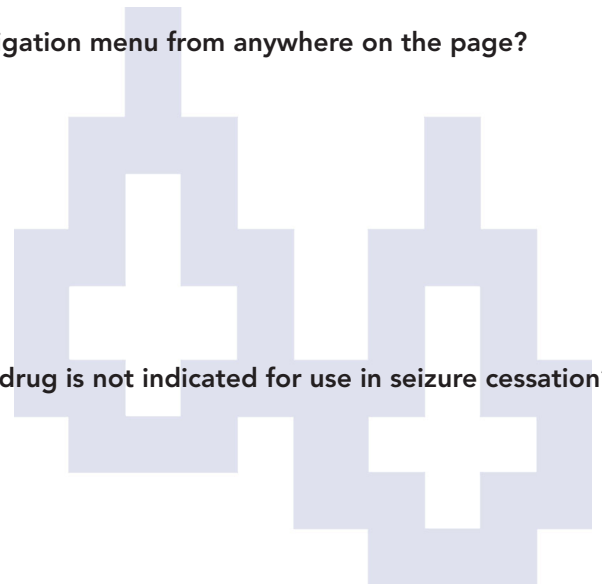
- a) Diazepam and Sodium Oxybate
- b) Diazepam and Clozapine
- c) Diazepam and Propiverine
- d) All of the above
- e) None of the above

8. The abbreviation SIRS stands for

- a) Systemic Inflammatory Reaction Syndrome
- b) Severe Acute Respiratory Syndrome
- c) Systemic Inflammatory Response Syndrome
- d) Syndrome of Inappropriate Diuretic Hormone
- e) None of the above

9. Which is not a sign or symptom of anaphylaxis?

- a) Seizures
- b) Bronchospasms
- c) Fever
- d) Shock
- e) Tachycardia





- 10. Out of the drugs listed, which combination should never be used because of its serious, possibly life threatening interaction?**
- a) Aspirin and Amoxicillin
 - b) Aspirin and Warfarin
 - c) Aspirin and Mifepristone
 - d) All of the above
 - e) None of the above
- 11. An infant appears acrocyanotic, with an a pulse lower than 100 beats per minute. He has a weak grimace, and respiratory effort, and his activity would be categorized as mild hypnotic. What is his APGAR after 1 minute?**
- a) 5
 - b) 3
 - c) 8
 - d) 13
 - e) None of the above
- 12. What is the indicated dose of Valium in adults with status epilepticus?**
- a) 10-15 mg/dose PO q4hrs; NMT 30 mg
 - b) 20-25 mg/dose PO q10-15 min; NMT 30 mg
 - c) 15-20 mg/dose IV q10-15 min; NMT 30 mg
 - d) 10-15 mg/dose IV q10-15min; NMT 30 mg
 - e) None of the above
- 13. If you are giving 250 mg of lidocaine IV drip in a 500 ml bag while maintaining 2 mg/kg/hr for a 150 pound adult, you set the drip rate at?**
- a) 272.11 ml/hr
 - b) 122.33 ml/hr
 - c) 218.75 ml/hr
 - d) 270.34 ml/hr
 - e) None of the above
- 14. Coumadin is in a group of drugs known as anticoagulants. To find other anticoagulants while in the Coumadin (warfarin) monograph, you would use which of the following?**
- a) Quicklinks menu
 - b) Home Index
 - c) Related Topics
 - d) Quick Reference
 - e) None of the above



15. Which is not a topic found under the Acute Care Hotlink?

- a) Life Support
- b) Shock Types
- c) Airway Support
- d) Airway Management
- e) Medical "Status"

Answers

Answer Key:

- 1) b
- 2) c
- 3) c
- 4) d
- 5) b
- 6) d
- 7) a
- 8) c
- 9) c
- 10) c
- 11) a
- 12) e
- 13) a
- 14) c
- 15) d