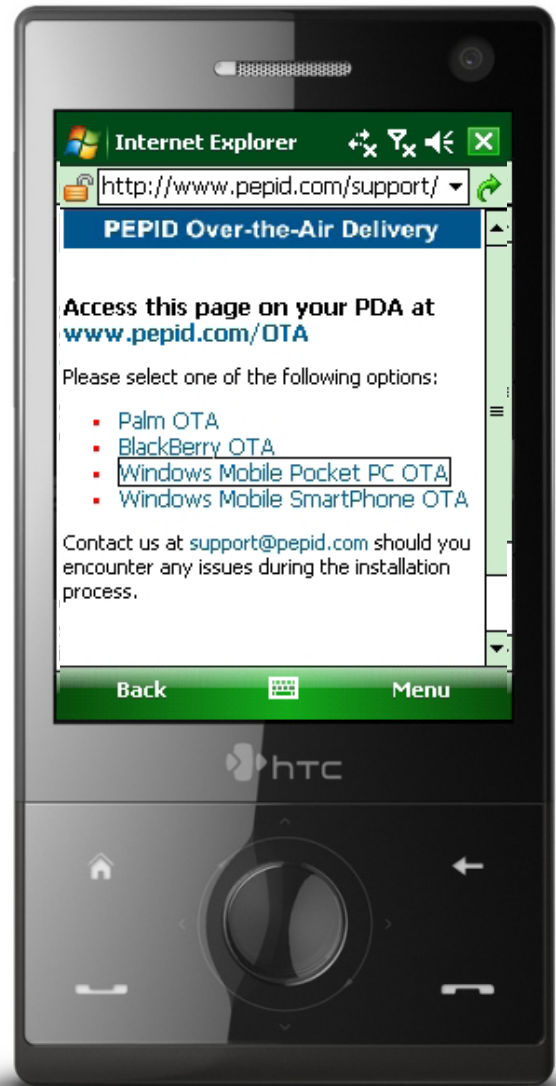
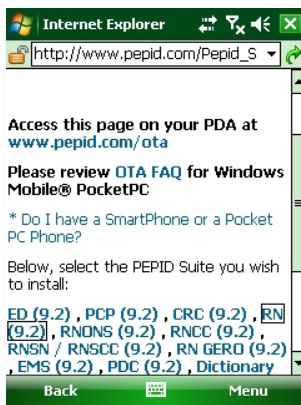




## Quick Start Guide: PocketPC

### >> Install

1. Access the following page on your Windows Mobile™ internet browser:  
**www.pepid.com/ota**
2. Select **Windows Mobile™ Pocket PC OTA** option
3. Select the PEPID suite you wish to install

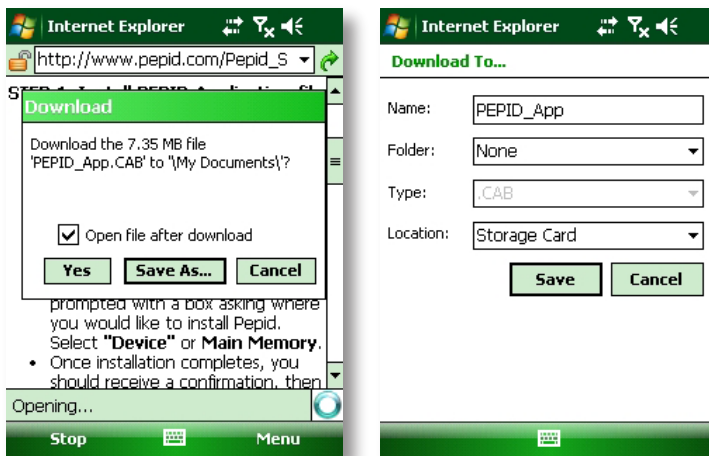




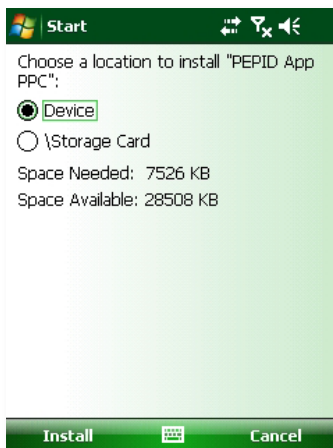
## >> Install Application File

1. Select the **PEPID Application file to download**. You should be presented with a box on your smartphone asking whether you wish to **Download** the file. Make sure the **"Open file after download"** box is checked and select **'Yes'**.

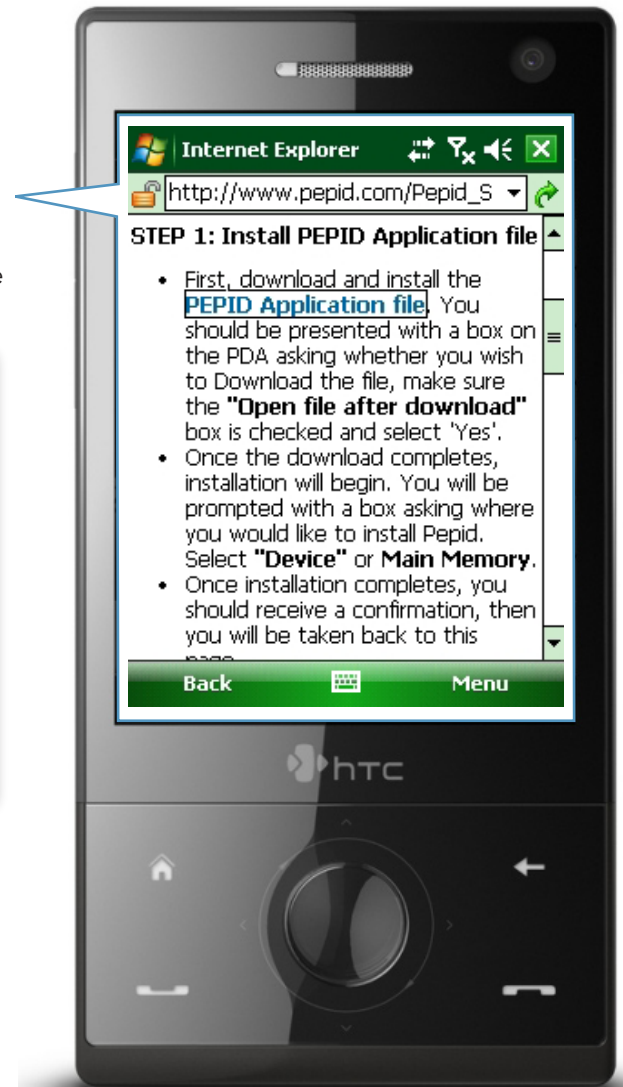
To save to your memory card, select **Save As** and select the **Download To Location** as **Storage Card**.



2. Once the download completes, installation will begin. You will be prompted with a box asking where you would like to install PEPID. Select **Device (Main Memory)** or **Storage Card**.



3. Once installation completes, you should receive a confirmation and will be taken back to the **OTA page**. If you are not immediately taken back, press your "back" button.



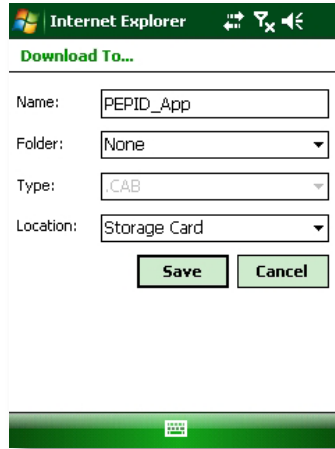
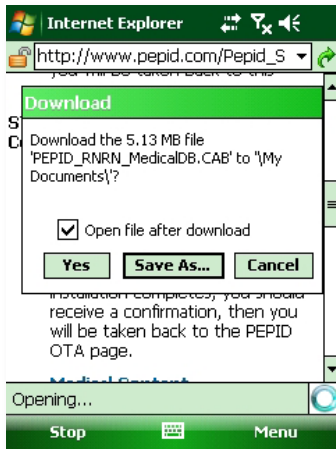


## >> Install Medical Content

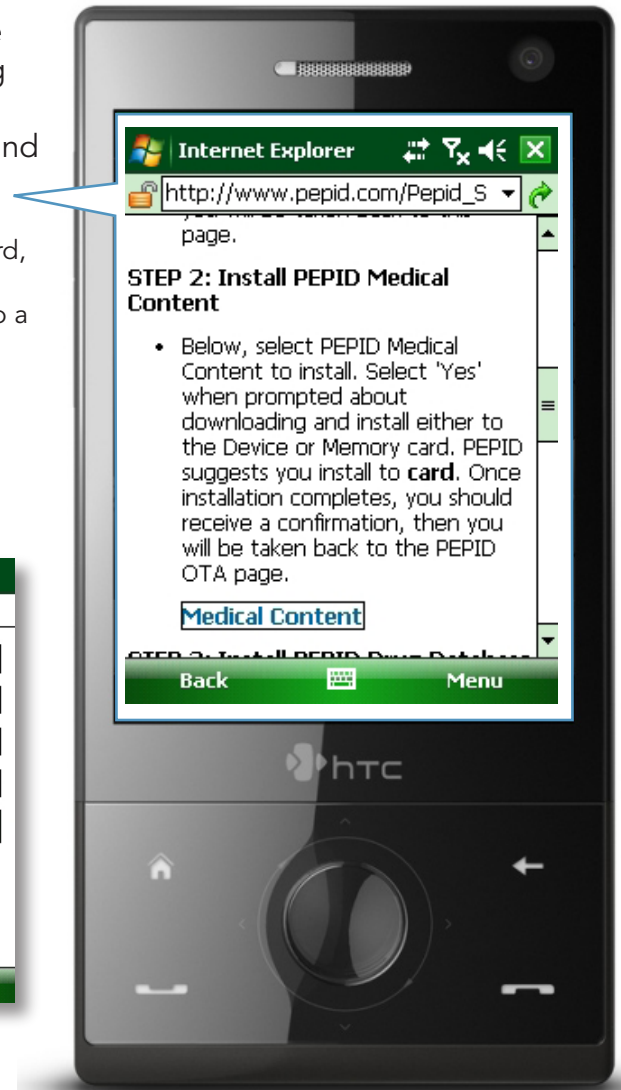
1. Select **Medical Content** to install. You should be presented with a box on your smartphone asking where you wish to Download the file. Make sure the "Open file after download" box is checked and select "yes."

If you wish to save the installation files to your memory card, select **Save As** and select the **Download To Location** as **Memory/Storage Card**. PEPID suggests you download to a Memory/Storage card.

2. Select **Yes** when prompted about downloading and install either to the **Device** or **Memory/Storage card**.



- 3) Once installation completes, you should receive a confirmation, then you will be taken back to the OTA page.



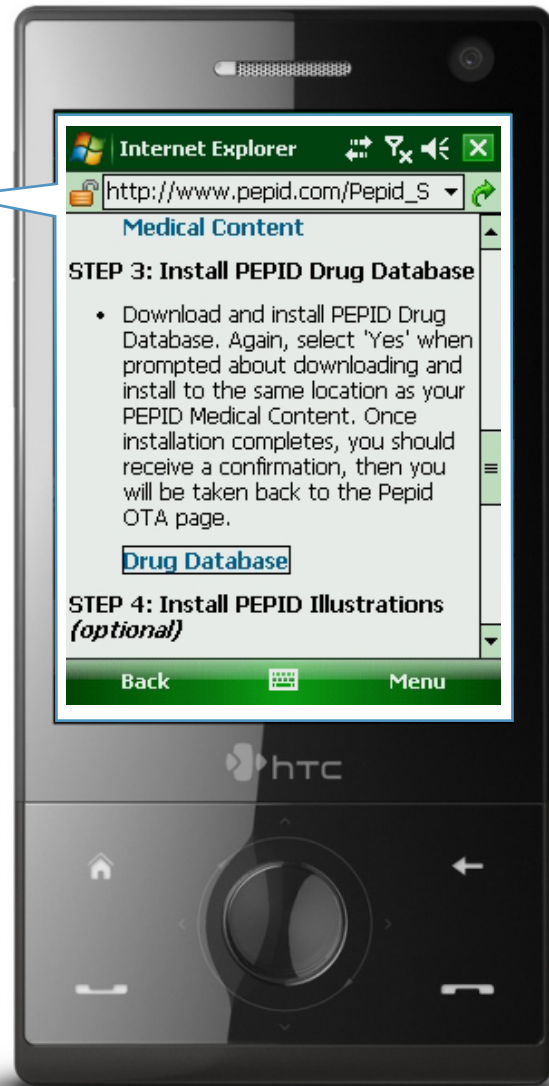
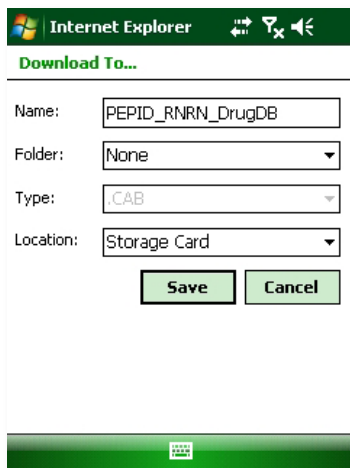
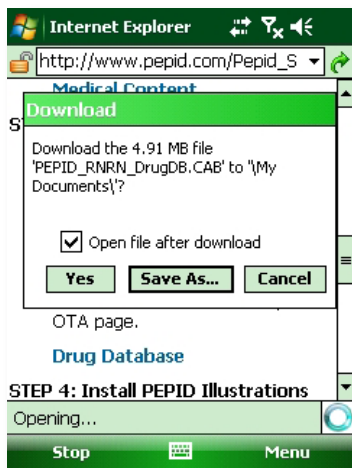


## >> Install Drug Database

1. Download and install **PEPID Drug Database**. You should be presented with a box on your smartphone asking where you wish to Download the file. Make sure the "Open file after download" box is checked and select "yes."

If you wish to save the installation files to your memory card, select **Save As** and select the **Download To Location** as **Memory/Storage Card**. PEPID suggests you download to a Memory/Storage card.

2. Select '**Yes**' when prompted about downloading and installing to the same location as your PEPID Medical Content (either **Device** or **Memory Card**).



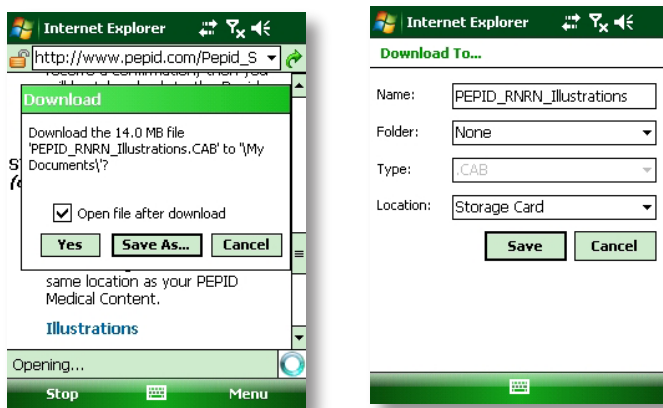


## >> Install Illustrations

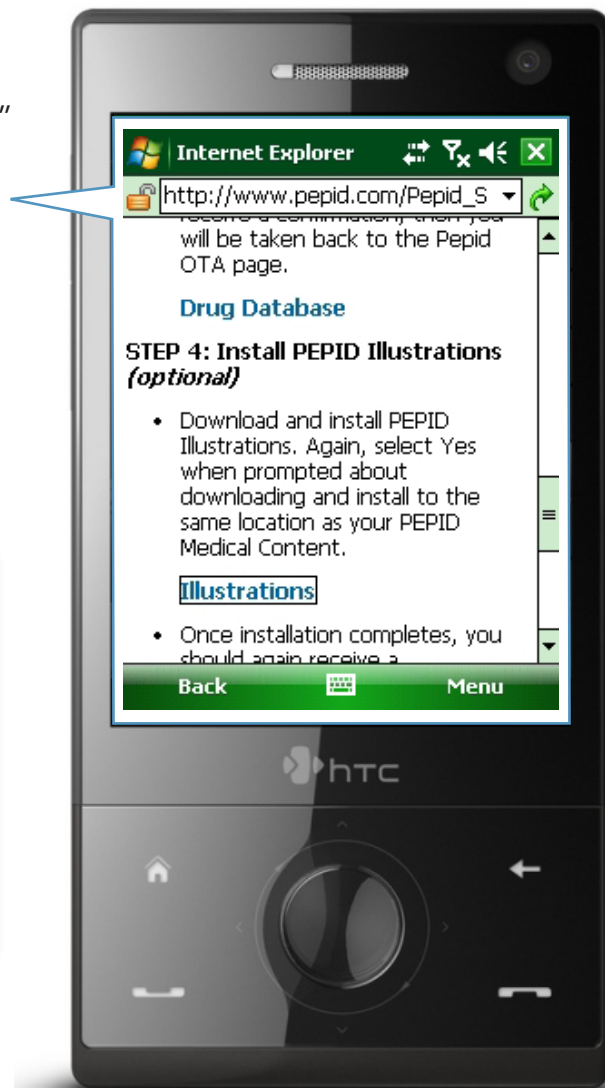
1. Download and install **PEPID Illustrations**.  
You should be presented with a box on your smartphone asking where you wish to Download the file. Make sure the "Open file after download" box is checked and select "yes."

If you wish to save the installation files to your memory card, select **Save As** and select the **Download To Location** as **Memory/Storage Card**. PEPID suggests you download to a Memory/Storage card.

2. Select **Yes** when prompted about downloading and install to the same location as your PEPID Medical Content (**Device** or **Memory/Storage card**).



3. Once installation completes, you should again receive a confirmation. Select **Ok**.
4. Close your browser and tap **Start > Programs** and open **PEPID**.



## >> Registration

1. Go to the **PEPID Document Manager** on your device, select '**Register.**'  
Note: Registration not required for free trials.

For additional assistance, please contact PEPID Technical Support:

Email: support@pepid.com • Live Chat: <http://www.pepid.com/Support.asp> • Phone: (888) 321-7828