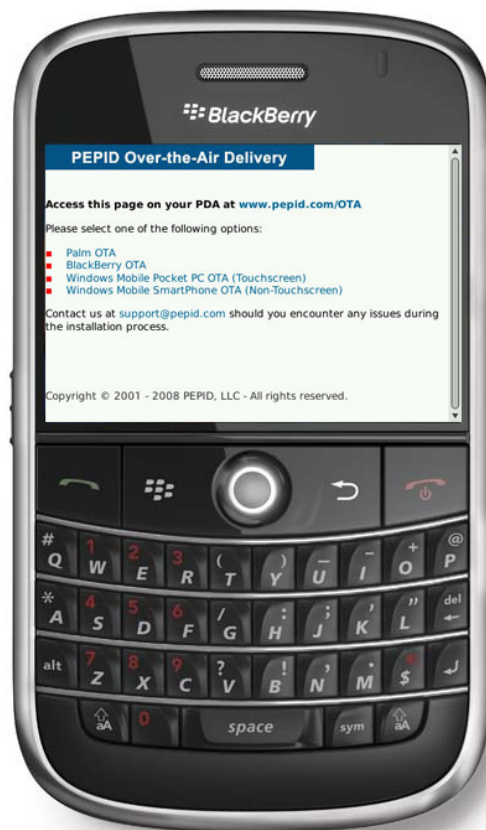




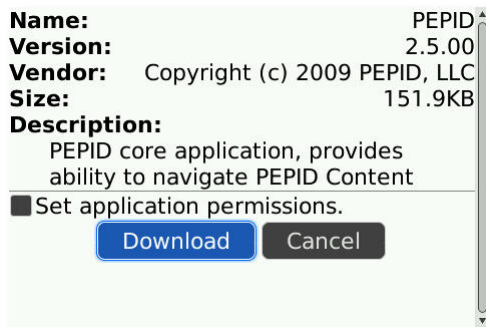
## Quick Start Guide: BlackBerry

### >> Install

1. Visit **www.pepid.com/ota** on your BlackBerry's internet browser.
2. Select the **BlackBerry OTA** link.
3. On the following page, select **Install PEPID for BlackBerry**.



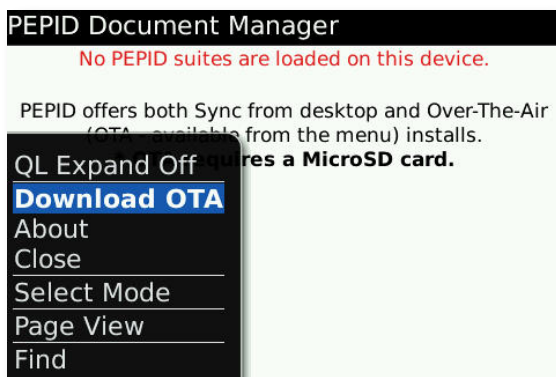
4. When prompted, select the **Download** button.



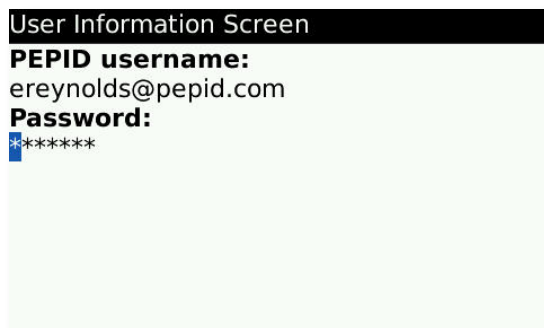


>> **Download**

1. Go to **Applications (or Downloads)** and open the **PEPID** application.
2. Press the **Menu** button on your BlackBerry and select **Download OTA**.



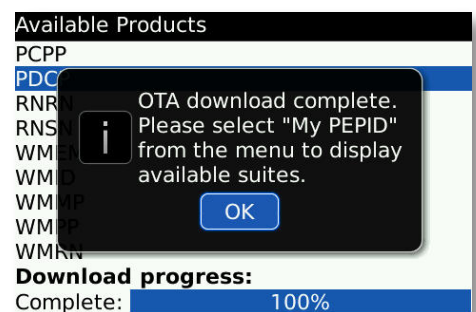
3. Enter your **email address** and **password**, press the **Menu** button and select **Ok**.



4. Once the application has found your products, highlight the product you wish to download, press the **Menu** button on your BlackBerry and select **Download**.



5. Once the download is complete, you will receive this message.





## >> Register

1. Close and reopen the **PEPID** application.
2. Highlight your Suite.
3. Press **Click here to register**.
4. Enter your email address and password.

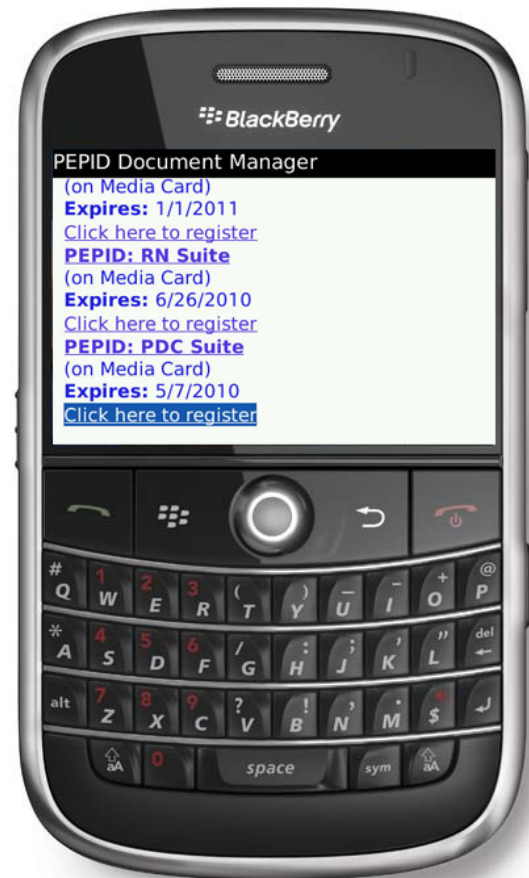
PEPID Wireless Registration  
**PEPID username:**  
reynolds@pepid.com  
**Password:**  
**Register**  
Manual Registration  
Delete  
Cancel  
Select  
Clear Field  
Show Symbols

5. Click **Register**.

PEPID Wireless Registration  
**PEPID username:**  
reynolds@pepid.com  
**Pass**  
\*\*\*\*  
! Thank you for registering  
your PEPID product  
OK

6. Click on your suite from the Document Manager to access your software. This will initiate the building index process, which can take up to 20 minutes.

Search:  
\* Empty \*  
i Building Index. This  
may take a few  
minutes, please wait...



**For additional assistance, please contact PEPID Technical Support:**

Email: support@pepid.com • Live Chat: <http://www.pepid.com/Support.asp> • Phone: (888) 321-7828