

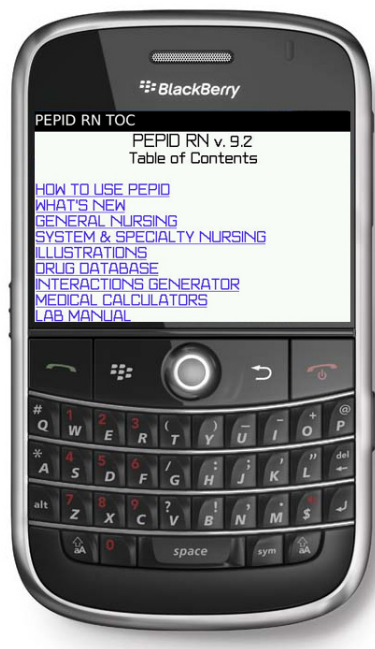


Professional Nursing Suite Tutorial: BlackBerry

This tutorial will teach you how to utilize every aspect of PEPID Professional Nursing Suite and is organized by the main navigation menu which can be located by pressing the BlackBerry menu key to the left of your trackball. At the end, you will find a quiz, which will prepare you to quickly and efficiently navigate through PEPID RN Pro.

>> Table of Contents

The Table of Contents allows you to see all that is offered on your PEPID Professional Nursing Suite. The Table of Contents is always available through the menu key, as well as at the top of the index page.



Within the Table of Contents, you select from a thematic listing of topics as shown below:

- How to Use PEPID
- What's New
- General Nursing
- System & Specialty Nursing
- Illustrations
- Drug Database
- Interactions Generator
- Medical Calculators
- Lab Manual
- Warning

>> Back

To return to the previous screen, simply click the back button on your BlackBerry device. If you select a link to view a subtopic, you can use the Back icon to return to the previous screen, just like on your internet browser.



>> Acute Care Reference

The Acute Care Reference is available through your menu key and provides links to immediate life saving protocols: BLS, ACLS, ATLS, PALS, RSI, procedures, algorithms, quick drugs and drips, etc.

The {TOC} Table of Contents Link located top right, links you to a broader range of topics.

With the Acute Care Reference you select topics from a thematic listing as shown below:

1. Life Support
2. Airway Support
3. Acute Care Procedures
4. Medical Status
5. Shock Types
6. Other
7. Authors

>> Help

The help section is always available through the menu key and contains a built-in tutorial, as well as a description of the content and updates added with your last update.

Within the help section you can view a thematic listing of the following topics:

1. How To Use PEPID
2. What's New in PEPID
3. Table of Contents
4. Abbreviations
5. Glossary/Eponyms
6. Normal Lab Values
7. Stedman's Dictionary
8. Procedures
9. Illustrations
10. Why PEPID
11. Authors





>> Drug Interactions Generator

The drug interactions generator allows you to select up to eight different drugs, herbals, OTCs and supplements and cross reference their interactions. It can be accessed through the menu key or through the table of contents.

If you are viewing information on a particular drug, you can access the interactions generator directly from the drug content and it will be automatically selected for you.

To Use:

1. Select Drug Interactions from your menu key.
2. Use keyboard to enter drug name
3. Select up to eight drug names
4. Select confirm after all selections are made
5. Select Get Interactions

The drug interactions generator checks interactions between each subject drug and all of the other drugs you have selected.

Notes:

- Numbers represent severity of interaction: 1 = low, 5 = high
- Interactions listed by decreasing severity
- When there are multiple interactions between two drugs, the strongest in severity will be in bold
- Other interactions of same group listed in regular type
- ↑ Indicates drug level or effect of the following drug will be increased
- ↓ Indicates drug level or effect of the following drug will be decreased
- ↑ ↓ Indicates drug level or effect of the following drug will either be increased or decreased
- ATC: anticoagulation
- Tap any underlined text for more information

Example: Cross reference the following drugs: Amiodarone, Biaxin, Coumadin, and Ginger. PEPID finds seven drug interactions. Click on any of the interactions to view details. A sample of the results are as follows:

- 5- ↑ Qt:Amiodarone, Biaxin-Both increase QTc interval, never use combination
- 3- ↑ Amiodarone, Coumadin-Amiodarone increases levels and effects of Coumadin. Possible serious or life-threatening interaction
- 3- ↑ Coumadin, Ginger-Both are anticoagulants-Potential danger





>> Differential Diagnosis Generator (DDX)

How to Use:

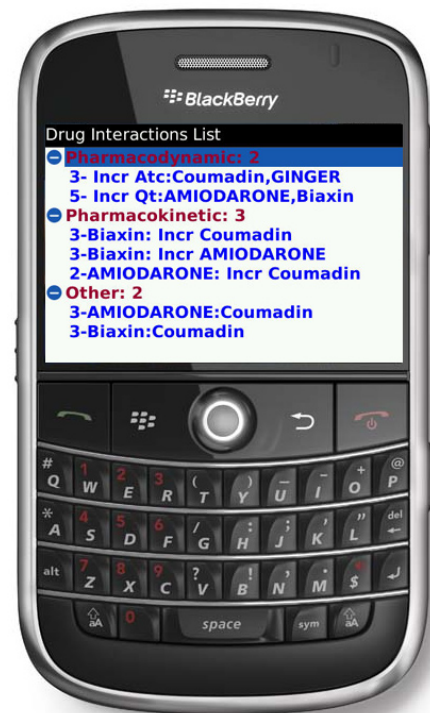
- Select the menu button on the Blackberry and go to "DDX Generator".
- Once the DDX opens, you are presented with the Symptoms screen.
- At the Symptoms screen, you can change the HPTs filters [Symptoms (History), Signs (Physical Exam) Test (T)]. To do this, press the menu button and select "Change Filters". Check/uncheck desired filters.
- To return back to the Symptoms screen, press the menu button and go to "Select Symptoms".

To Search for Symptoms:

- Type a symptom in the Search toolbar, and then select the symptom with your trackball. The selected symptom becomes bolded in blue.
- If the selected symptom has sub-symptoms, you will be redirected to the sub-symptom page.
- Once you have selected all the proper sub-symptoms, press the Back button.
- Once you have selected all the symptoms, press the menu button and select "Confirm Selection".
 - To remove a selected symptom, highlight the symptom, press the menu button and select "Remove Item".
 - To make any changes to your symptoms, press the menu button and return to "Select Symptoms".
 - To start completely over, press the menu button and select "Start Over".

Diagnosis Results:

- Once you have confirmed your selected symptoms, press the menu button and select "Get Diagnosis" and you will be taken to the Diagnosis screen.
- To change filters for Gender, Age Group, Severity, Etiology and Onset, press the menu button and select change filters. Highlight the filter and press the trackball to change the filter.
- The conditions associated with the selected symptoms will be listed and rated on a scale from 1 to 5, 5 being the most likely diagnosis.
- If an item is underlined, you can select the item (using the trackball) to find more information. You can also find treatment information for each underlined item. Highlight the diagnoses, press the menu button and go to "Treatment." Press the back button to return to the diagnosis screen.
- To view the related symptom(s) with any of the listed diagnoses, highlight the listed diagnosis, press the menu button and choose, "Related Symptom".
- To exit, DDX Generator, press the menu button and select "Back to Content".



* Available in RN Pro Platinum.



>> Medical Calculators

To access an alphabetical list of medical calculators, select medical calculators from your menu key. If you'd like to access calculators by type, select medical calculators through the table of contents. Our calculators are also integrated within our clinical and lab content.

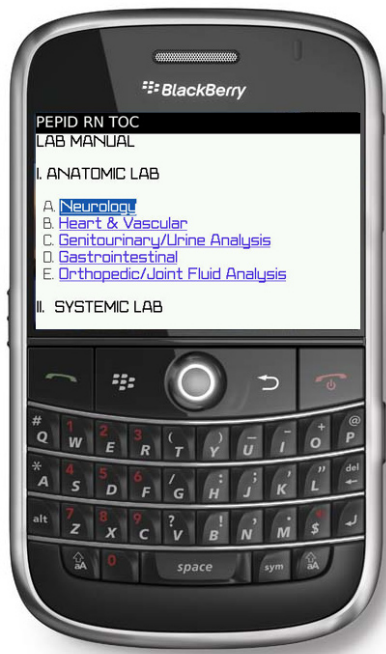
To Use:

1. Select Medical Calcs from the menu key.
2. Locate the calculator you are search for
3. Tap on the calculator icon
5. Input data your keyboard
6. Click the results button

Example: Calculate the Body Mass Index of a 5'7" female weighing 150 lbs.

- Result: 23.5248 kg/sq.m.

It also tells you that the normal range is 23-27 kg/sq.m.



>> Laboratory Manual

PEPID's lab manual provides critical values and normal ranges for common lab tests. You can view labs by type through the main table of contents, or an alphabetic listing through the menu key.

- Provides critical values and normal ranges for common lab tests
- Lists conditions and medications associated with atypical levels of measured factors
- Contains links to related medical calculators and lab tests

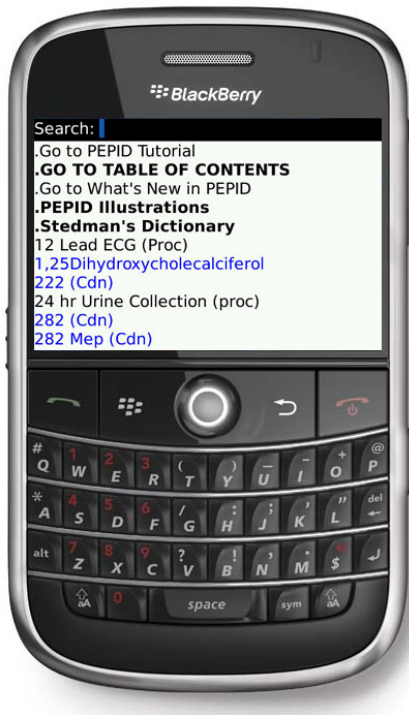


>> Quicklinks Menu

The quicklinks menu icon allows you to jump to specific information within the top you're viewing. It can be found from your menu key, below your main menu items. To exit your the menu, click the back button on your device. Just click on the BlackBerry menu key at any time to bring the quicklinks back up.

The quicklinks menu icon allows you to:




- Access subtopic navigation menu from anywhere on page
- Display quicklinks menu at the bottom right-hand corner
- Select from list to link directly to subtopic



>> Home

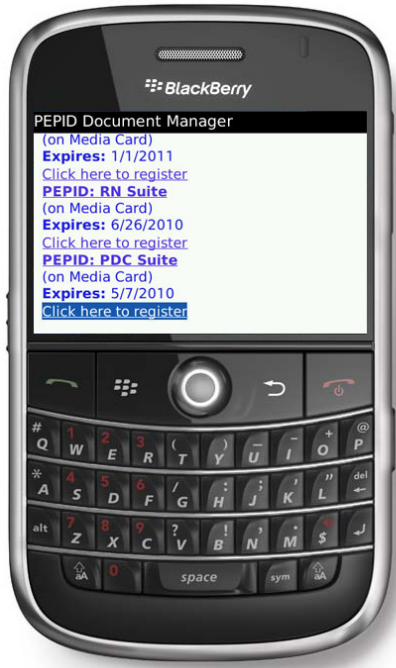
The home icon takes you to the PEPID index, which is essentially your search tool for PEPID. The index allows you to search for anything within our content, whether it's a disease, drug name, medical calculator, lab or procedure.

To Use:

1. Select Home from your BlackBerry menu key
2. Type in the letters of the topic you want to search, like Vtach, for example
3. Select Vtach in the listing menu
4. From the Ventricular Tachycardia (Vtach) page, you can view your quicklinks by scrolling through your menu to jump to subtopics including diagnosis, pathophysiology, or treatment
5. From the Vtach page, you can tap on the  Camera icon to view Monomorphic and Polymorphic rates. Click back to return.
6. On the Vtach page, use trackball to scroll down the page. Select vagal maneuvers to view more details. Click the back button on your device to return.
7. Continue to scroll down the Vtach page, and you will come across relevant calculators. You can tap on the Qt int to view the QT Interval Correction equation, or you can tap the  calculator icon on the screen next to the Qt int link to use the calculator. Click back to return.
8. Continue to scroll down the Vtach page, and tap on the Amiodarone link. From the quicklinks menu, you can view dosing, kinetics, IV info, overdose management, etc. You can also scroll through the content using your trackball. Scroll down and tap on any of the  IV drip rate icons to use a dosing calculator.

Notes:

- The fastest way to find any topic
- Links directly to the index
- Use keyboard to enter first few letters
- Alphabetical index is colorized for distinction between keywords
- Drug topics are blue
- Tables of contents are bolded
- Chapter headings are bolded and capitalized



>> My PEPID

My PEPID takes you to the PEPID Document Manager, which allows you to:

- View where PEPID is being stored on your device
- Find out when your subscription expires
- View the Register Document
- Register new products on your device
- Delete old products on your device

>> Other Links



The camera icon takes you to all related images, including original high-resolution color illustrations that are great for patient education or personal reference. Our illustration include clinical anatomy, rhythm strips, procedures, environmental, toxicologic and diseases and disorders.



The IV Drip Rate icon takes you a drug-specific IV drip rate calculator.

{Rel. Topic} The Related Topic link takes you to broader topics related to the current page.



The Treatment link allows you to view related treatments.



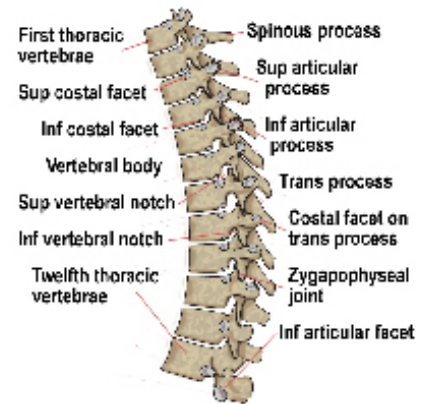
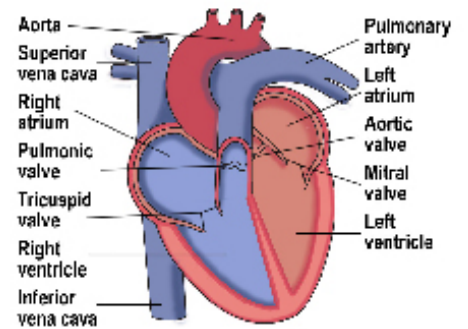
The Nursing Considerations link allows you to view any relevant nursing considerations.




This icon indicates a Stedman's term is integrated, simply click to read the definition of the term.



This icon indicates there is an evidence-based inquiry embedded in the content.





Professional Nursing Suite TEST

1) Out of the drugs listed, which combination should never be used because of its serious, possibly life threatening interactions?

- a) dopamine and furazolidone
- b) dopamine and mazindol
- c) dopamine and ephedrine
- d) dopamine and midodrine
- e) None of the Above

2) What is the first step listed in the History and Physical General Guidelines

- a) Assess the patients willingness and ability to cooperate
- b) Provide for patient privacy
- c) Verify the patients identity
- d) Find out if there are any alternative sources for obtaining history
- e) None of the Above

3) Which is not a pain intensity rating tool?

- a) Numeric rating scale
- b) Visual analog scale
- c) Audible ratio
- d) Pediatric assessment scales
- e) VAS with anchors

4) Nursing considerations for a patient with acute pancreatitis would include monitoring:

- a) Electrolytes, metabolic profile, CBC
- b) Electrolytes, heart rate, CBC
- c) CBC, heart rate, CXR
- d) Heart rate, electrolytes, CXR
- e) All of the Above



5) An 80 kg patient is set to receive 0.02 mg/kg/min of lidocaine. There is 1 gram of medication in a 1 liter bag. What should the drip rate be set at?

- a) 64 ml/hr
- b) 97 ml/hr
- c) 86 ml/hr
- d) 96 ml/hr
- e) None of the Above

6) When in using the Home Index, to go directly to the Table of Contents, you would:

- a) Tap the icon labeled "TC"
- b) Type TOC
- c) Type Main
- d) Tap the "?" icon
- e) None of the Above



7) For a PICC line procedure, which piece of equipment is not included in an equipment kit?

- a) Long intracath 24 inches
- b) Tourniquet
- c) Prep
- d) Gloves
- e) All should be included in kit

8) Which is not a complication from a lumbar puncture procedure?

- a) Spinal epidural abscess
- b) Spinal epidural hematoma
- c) Spinal shock
- d) Acquired epidermal tumor
- e) Meningitis

9) Out of the drugs listed, which combination should never be used because of its serious, possibly life threatening interactions?

- a) warfarin and allopurinol
- b) warfarin and mifepristone
- c) warfarin and phenytoin
- d) warfarin and amikacin
- e) None of the Above



10) The abbreviation "asp." stands for?

- a) Aspirate
- b) Aspartame
- c) Aspartate Aminotransferase
- d) aspirin
- e) None of the Above

11) Out of the drugs listed, which combination should never be used because of its serious, possibly life threatening interactions?

- a) Zoloft and Coumadin
- b) Zoloft and pimozide
- c) Zoloft and diflunisal
- d) Zoloft and fenbufen
- e) None of the Above

12) What is the recommended dose of Ambien for an elderly patient?

- a) 4 mg PO qHS
- b) 6 mg PO q4hr
- c) 5 mg PO qHS
- d) 1 mg PO qHS
- e) None of the Above

13) If a blood sample is drawn with 5 reticulocyte cells and 500 red blood cells, the reticulocyte percent is?

- a) 5%
- b) 50%
- c) 1.5%
- d) 1%
- e) None of the Above

14) What is the total body potassium for a 190 lb patient, assuming a factor of 55 mEq/kg?

- a) 3779 mEq
- b) 47.39 mEq
- c) 4739 mEq
- d) 4.739 mEq
- e) None of the Above



15) When searching the “kinetics/dynamics” of Ritalin, we find that it is in what pregnancy category?

- a) A
- b) B
- c) C
- d) D
- e) E

16) How many elbow view pictures are there in PEPID?

- a) 1
- b) 2
- c) 3
- d) 4
- e) 5

Answers

Answer Key:

- 1) a
- 2) c
- 3) c
- 4) a
- 5) d
- 6) a
- 7) e
- 8) c
- 9) b
- 10) a
- 11) b
- 12) c
- 13) d
- 14) c
- 15) c
- 16) c